

## Faster *in vitro* to *in vivo* study translation

A diverse, oncogenic *in vitro* screening panel of more than 150 cell lines ready for *in vivo* efficacy studies.

XenoSelect models are proven, oncogenic cell lines which have been well validated both *in vitro* and *in vivo*, enabling a swift transition from *in vitro* screen to *in vivo* efficacy study in a one stop service.

- Large panel of models ready to screen.
- Curated, online, searchable database (XenoBase®) of:
  - phenotypic and genotypic data
  - growth curves
  - standard of care treatment data.
- Stringent quality control of cell lines and study results.
- Fast study turnaround, analysis, and interpretation to enable immediate follow on *in vivo* studies.

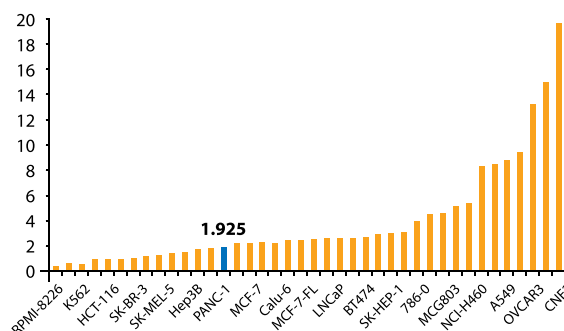
### XenoSelect

157 cancer cell lines with corresponding xenograft models

Tissue of Origin	Cell Lines
Blood	39
Lung	31
Colorectum	15
Liver	13
Breast	7
Pancreas	7
Stomach	7
Ovary	5
Skin	5
Bladder	4
Prostate	4
Kidney	2
Brain & Nerves	1
Others	17

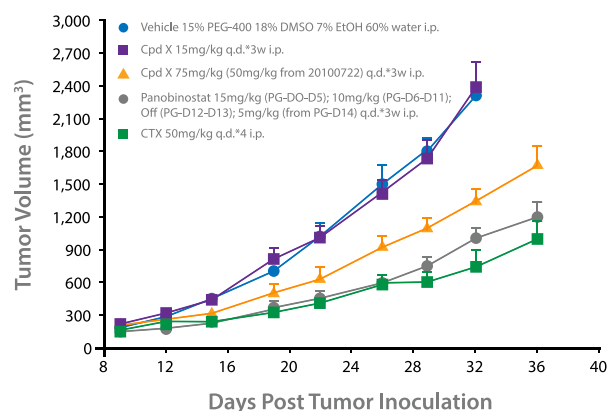
## In Vitro

IC<sub>50</sub> of Compound X on XenoSelect Subpanel of 40 Cell Lines



## In Vivo

Antitumor Effect of Compound X, CTX, and Panobinostat in the Treatment of Hep G2 Human Liver Cancer Cell Xenograft Model



#### Contact Sales

US: +1.855.827.6968  
UK: +44 (0)870 166 6234  
[busdev@crownbio.com](mailto:busdev@crownbio.com)



#### Schedule Scientific Consultation

Request a consultation to discuss your project.  
[consultation@crownbio.com](mailto:consultation@crownbio.com)



#### Explore Scientific Data

Log into XenoBase to review cell line data.  
[xenobase.crownbio.com](http://xenobase.crownbio.com)