



CrownBio
CONNECTING SCIENCE TO PATIENTS

Cell-Based Target Identification

Integrated Oncology Platform to advance preclinical development

Crown Bioscience's Integrated Oncology Platform is uniquely positioned to identify lead compounds, advance validated candidates, and expedite transition to *in vivo* efficacy studies.

Well-Characterized Cell Line Menu

Crown Bioscience has more than 600 STR-verified, mycoplasma free cell lines that can be used in both comprehensive screens or targeted assessments of your lead compounds. Many are matched to *in vivo* models for ease of translation to the later stages of development.

OmniPanel™

- Over 500 cell lines covering multiple cancer types routinely run for various projects

XenoSelect™

- Over 150 *in vitro* cell lines ready for *in vivo* studies using matched ValidatedXeno™, PrimeXeno™, and other cell line derived xenograft models

PrimePanel™

- Unique collection of cell lines derived from our PDX model collection ready for *in vivo* studies using matched HuPrime® models

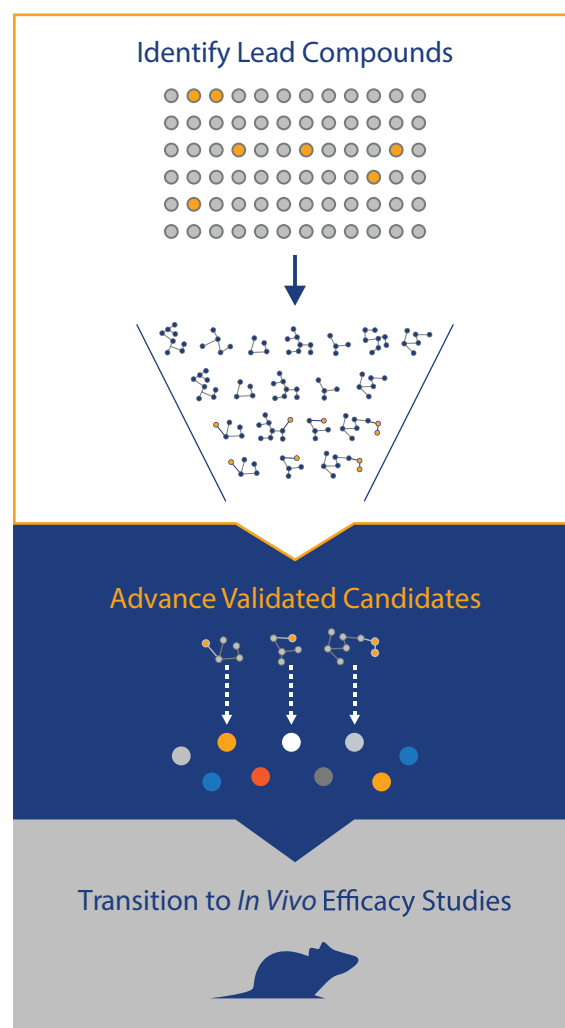
RNASeqPanel

- More than 170 genomically characterized cell lines to correlate mutation status, copy number variation, and expression levels with drug response

OmniScreen™

Cost-Effective, Large-Scale Cell Screening

High throughput screening of at least 50 cell lines per run to maximize your savings. Includes a positive drug control, and all cell line revival costs are covered by CrownBio. Choose from the OmniPanel, XenoSelect, PrimePanel, and RNASeqpanels.



Cell-Based Target Identification

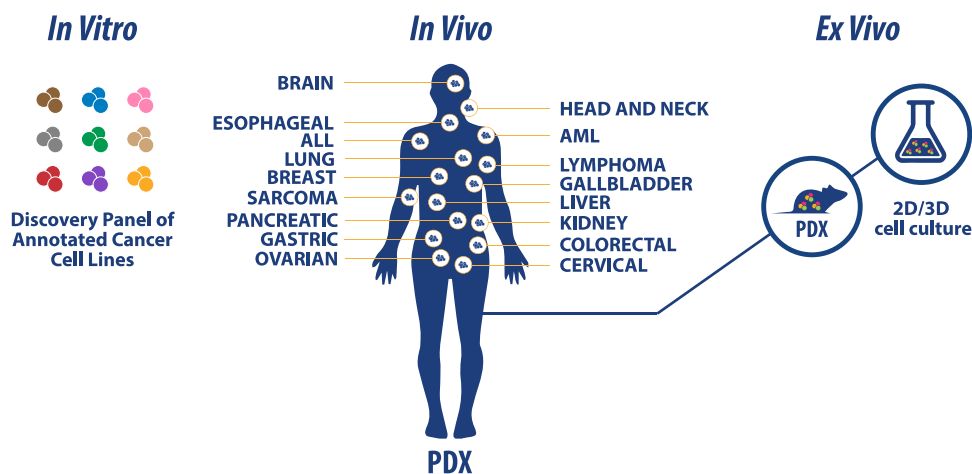
The Power to Choose

Our menu is expansive and constantly growing, so we focus on making it easy for you to select the models that have the characteristics important in your study, e.g. sequencing data, gene expression data, response to SoC, etc.

Database	Description	Get Access
OncoExpress™	Oncology models	oncoexpress.crownbio.com
HuBase™	PDX derived models and cell lines	hubase.crownbio.com
MuBase®	Immuno-oncology models	mubase.crownbio.com
XenoBase®	Cell lines/cell line derived xenografts	xenobase.crownbio.com

Improved Translation with Matched *In Vitro*, *In Vivo*, and *Ex Vivo* Models

CrownBio's Integrated Oncology Portfolio contains a range of *in vitro* linked models and assays to support a swift and seamless transition to *ex vivo* and *in vivo* studies.



Comprehensive Analysis Services

Available Methodologies Include:

- FACS
- Western blot
- Whole exome sequencing
- RNA sequencing
- Si/sh RNA knockdown
- Multiplexed immunoassays

Common Applications Include:

- High throughput cytotoxicity screening
- *In vitro* drug combination studies
- 3D clonogenic assays
- 3D Tumor Growth Assays
- Target validation studies
- Adhesion, migration, and invasion assays
- Angiogenesis assays
- Apoptosis studies
- ADCC and CDC analyses
- Cell cycle analysis
- Pharmacodynamics/pharmacokinetics analysis



Contact Sales

US: +1.855.827.6968
UK: +44 (0)870 166 6234
busdev@crownbio.com



Schedule Scientific Consultation

Request a consultation to discuss your project.
consultation@crownbio.com



OncoExpress

Get Your Credentials Today
Visit: OncoExpress.crownbio.com