

Radiation Therapy



CrownBio
CONNECTING SCIENCE TO PATIENTS

Precision radiotherapy with applications from simple subcutaneous to complex metastatic studies

Predicting how novel treatments work in combination with radiotherapy is critical. CrownBio provides an integrated platform for preclinical drug development and expert consultation that will enable your clear next-step decision and improve the translational prediction of your next combination study.

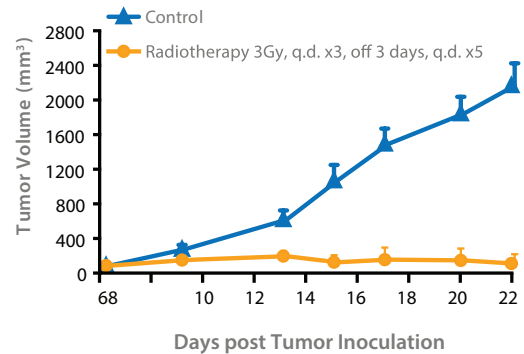
- Validated syngeneic or clinically relevant xenograft models for combination studies.
- Determine efficacy and response to treatment.
- Select qualified lead agents.

Our service delivers image beam guided focal radiation using PXi X-RAD SmART technology. This technology enables fast, accurate delivery in all treatment scenarios, including complex metastatic studies.

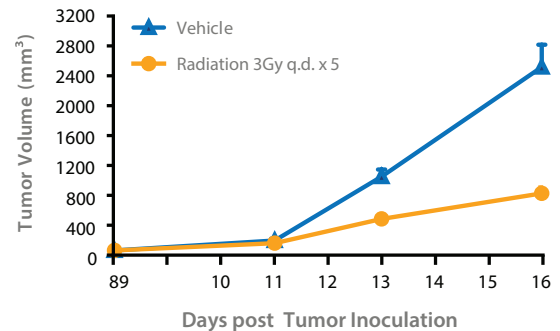
Quick and Easy Model Selection

Selection of the appropriate syngeneic tumor models of interest is made easy by our curated online murine cancer model database **MuBase®**, and our powerful new search engine (which searches models from all our oncology databases) **OncoExpress™**.

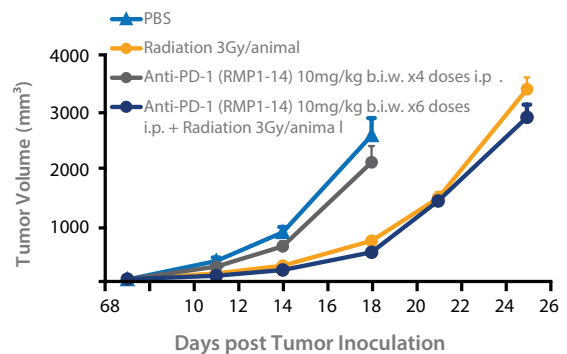
Subcutaneous CT26.WT Adenocarcinoma Model Response to Radiotherapy



Subcutaneous B16-F10 Melanoma Model Responds to Radiotherapy



Subcutaneous RM-1 Prostate Cancer Model Response to Radio- and Combination Therapy



 **Contact Sales**
US: +1.855.827.6968
UK: +44 (0)870 166 6234
busdev@crownbio.com

 **Schedule Scientific Consultation**
Request a consultation to discuss your project.
consultation@crownbio.com

 **OncoExpress**
Get Your Credentials Today
Visit: OncoExpress.crownbio.com