

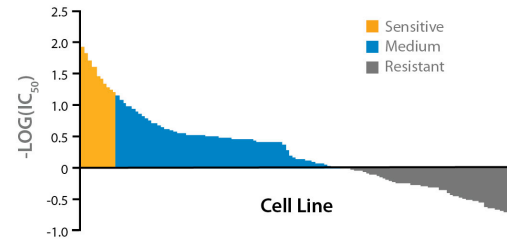
Why guess which model/disease is best for your study?

Screen over 500 known tumorigenic cell lines *in vitro*.

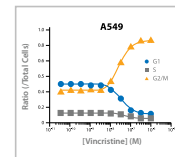
OmniPanel cell lines are annotated and well-characterized. STR verified and mycoplasma tested with data available in our searchable online database – XenoBase®.

- Multiparameter screening with the Acumen eX3.
- Rapid screening, analysis, and reporting.
- Evaluate and quantify two-drug combination effects (synergistic, antagonistic, and additive) using the CrownSyn™ bioinformatics service.
- Matched and validated *in vivo* efficacy models.
- Functional assay services:
 - High throughput cytotoxicity screening
 - *In vitro* drug combination studies
 - 3D clonogenic assay
 - Target validation studies
 - Adhesion, migration, and invasion assays
 - Angiogenesis assays
 - Apoptosis studies
 - ADCC and CDC analyses
 - Cell cycle analysis
 - Pharmacodynamics/Pharmacokinetics analysis.

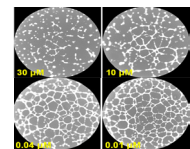
Profile Compounds across OmniPanel



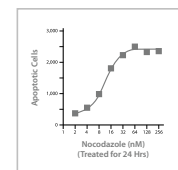
Cell Cycle Analysis



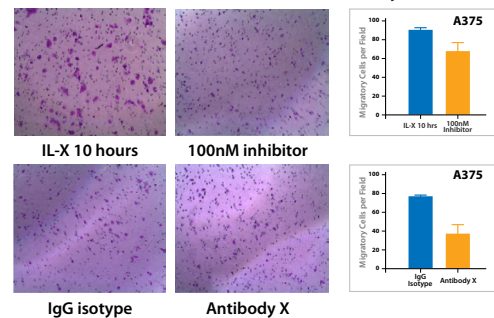
Angiogenesis



Annexin-V/PI in HeLa229




Transwell Invasion Assay




Contact Sales
US: +1.855.827.6968
UK: +44 (0)870 166 6234
busdev@crownbio.com



Schedule Scientific Consultation
Request a consultation to discuss your project.
consultation@crownbio.com



Explore Scientific Data
Log into XenoBase to review cell line data.
xenobase.crownbio.com