

Flow Cytometry

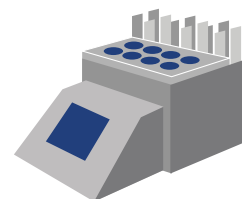
Robust immunophenotyping to inform immunotherapeutic development

Gain in-depth biological insight into your drug MoA and PD through robust cell population characterization. Understand the composition of immune relevant organs and heterogeneity of response to maximize therapeutic benefit.

Our well-established flow cytometry platform ensures high quality analysis of your preclinical and non-CLIA regulated samples. Gain expert guidance from our dedicated FACS team to optimize the right dissociation protocols, panel configurations, gating strategies, etc. for your study.

- Characterize cells in high throughput with limited sample volume, enabled by state-of-the-art equipment including:
 - Miltenyi gentleMACS™ Dissociators
 - BD FACSCalibur™
 - BD Accuri™ C6
 - BD LSRFortessa™ (up to 17 colors)
 - 96-well plate HTS attachment.
- Overcome tumor complexity with our pre-optimized list of over 20 protocols for tumor tissue dissociation and parent gating strategies.
- Accurate staining, processing, and gating through stringent controls and manual compensation.
- Eliminate human error through central data processing and analysis facilitated by data transfer software.
- Easily review high quality data and reports through our cloud portal.
- Choose from a range of dynamic and informative reporting packages including a variety of raw data, statistical analyses, observations, actionable recommendations, data visualization, etc.

gentleMACS™ Dissociators



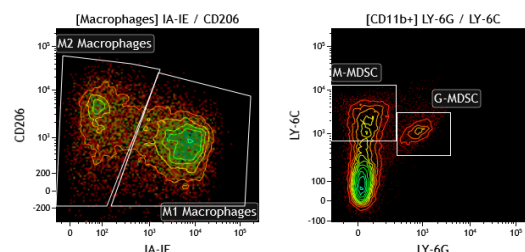
State-of-the-Art Flow Cytometers



Global Data Processing Center



Flow Cytometry Plots of Murine Tumor Infiltrating Macrophage and Myeloid Populations



Contact Sales

US: +1.855.827.6968
UK: +44 (0)870 166 6234
busdev@crownbio.com



Schedule Scientific Consultation

Request a consultation to discuss
your project.
consultation@crownbio.com



Additional Resources

Read supporting publications, white
papers, watch presentations, and more.
crownbio.com/resources