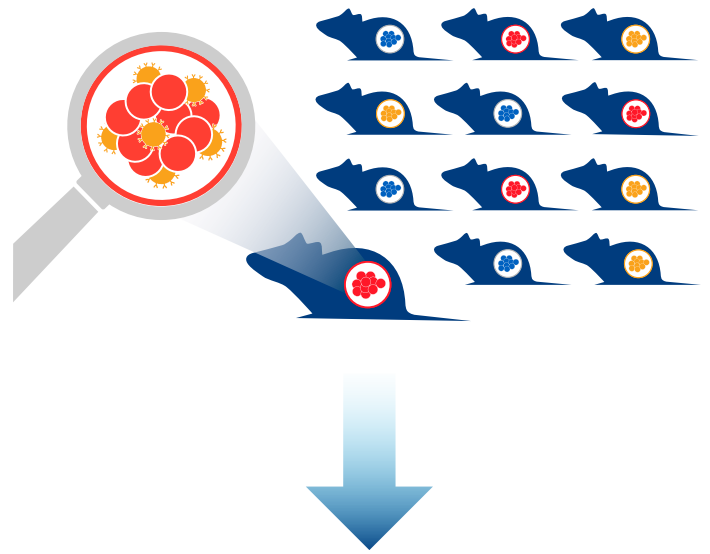


## Syngeneic and tumor homograft *in vivo* immunotherapy screening

Rapidly progress your immuno-oncology drug development programs with our highly experienced screening platform.

Choose **MuScreen** to:

- Screen agents using well-characterized syngeneic and tumor homograft models, with ICI benchmarking, baseline tumor immune profile, and tumor RNAseq data available.
- Evaluate single or combination agent strategies.
- Efficiently identify responder models.
- Uncover mechanism of action and predictive biomarkers.
- Benefit from CrownBio covering the cost of the vehicle group for all models.



### Syngeneic Model Panels

Choose our well-characterized syngeneic model panels, displaying heterogeneous immune phenotypes, for rapid and large scale compound efficacy or PD evaluation.

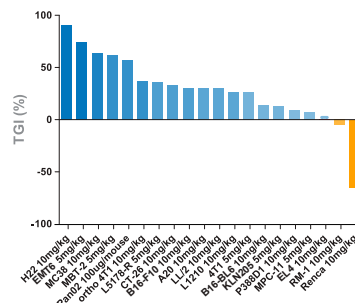
### Tumor Homograft Panel

Choose our unique tumor homograft models featuring clinically relevant mutations, for single agent immunotherapy and combination I/O and targeted agent efficacy assessment.

Our unique **MuPrime™** tumor homografts are transplants of spontaneous or carcinogen-induced GEMM tumors in immunocompetent syngeneic hosts:

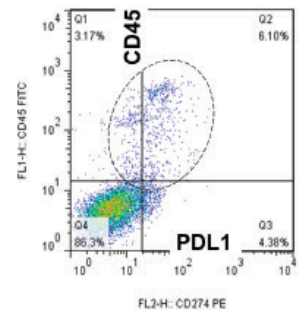
- Carrying disease-relevant oncogenic mutations of human cancers including KRAS, PTEN, and TP53.
- Preserving original GEMM tumor histo- and molecular pathology.

### Tumor Growth Inhibition (TGI)



### FACS Analysis


Total T, CD4<sup>+</sup>, CD8<sup>+</sup> T, T<sub>reg</sub>, NK, MDSC, Macrophage




**Contact Sales**  
US: +1.855.827.6968  
UK: +44 (0)870 166 6234  
[busdev@crownbio.com](mailto:busdev@crownbio.com)



**Schedule Scientific Consultation**  
Request a consultation to discuss your project.  
[consultation@crownbio.com](mailto:consultation@crownbio.com)



**Explore Scientific Data**  
Log into **MuBase®** to review model data.  
[mubase.crownbio.com](http://mubase.crownbio.com)