

2D and 3D Tumorigenic Cell Line Screening

Why guess which model/disease is best for your study?



A JSR Life Sciences Company

QUICKFACT

V1.0

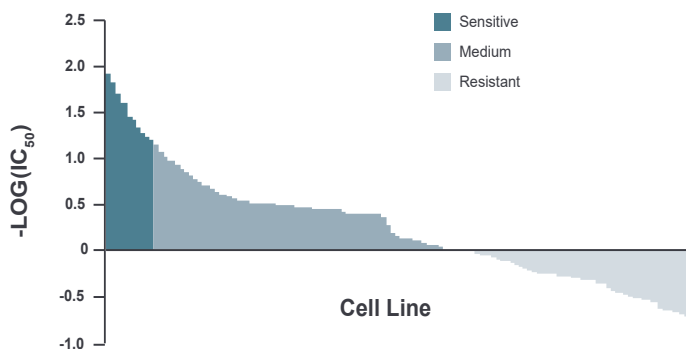
Screen over 500 known tumorigenic cell lines in 2D or 3D spheroid format

Cell lines are annotated and well-characterized.
STR verified and mycoplasma tested with data available in our searchable online database

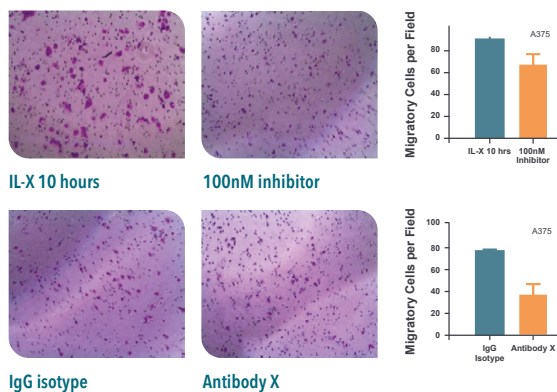
- Multiparameter screening with the Acumen eX3
- Rapid screening, analysis, and reporting
- Evaluate and quantify two-drug combination effects (synergistic, antagonistic, and additive) using the **CrownSyn** bioinformatics service
- Matched and validated in vivo efficacy models
- Functional assay services:

- High throughput cytotoxicity screening
- *In vitro* drug combination studies
- 3D clonogenic assay
- Target validation studies
- Adhesion, migration, and invasion assays
- Angiogenesis assays
- Apoptosis studies
- ADCC and CDC analyses
- Cell cycle analysis
- Pharmacodynamics/Pharmacokinetics analysis.

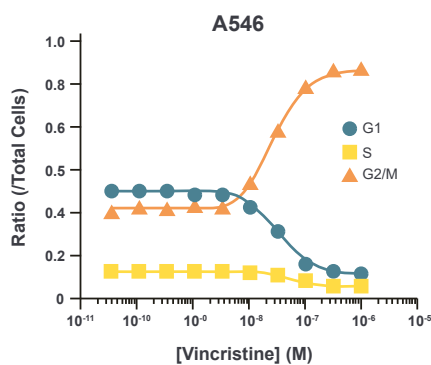
Profile Compounds



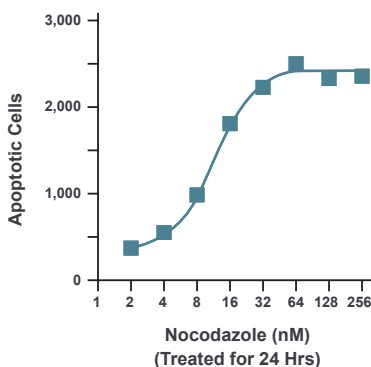
Transwell Invasion Assay



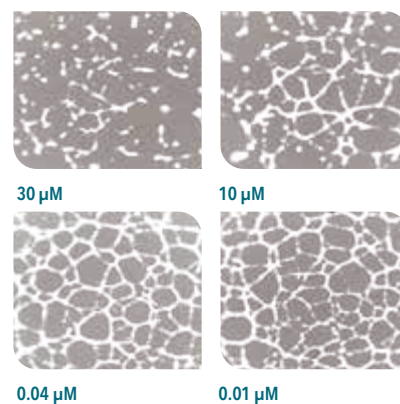
Cell Cycle Analysis



Angiogenesis



Annexin-V/PI in HeLa229



Get in touch



Sales

US: +1 858 622 2900
UK: +44 870 166 6234

busdev@crownbio.com
www.crownbio.com



Science

consultation@crownbio.com

