

# Digital Pathology

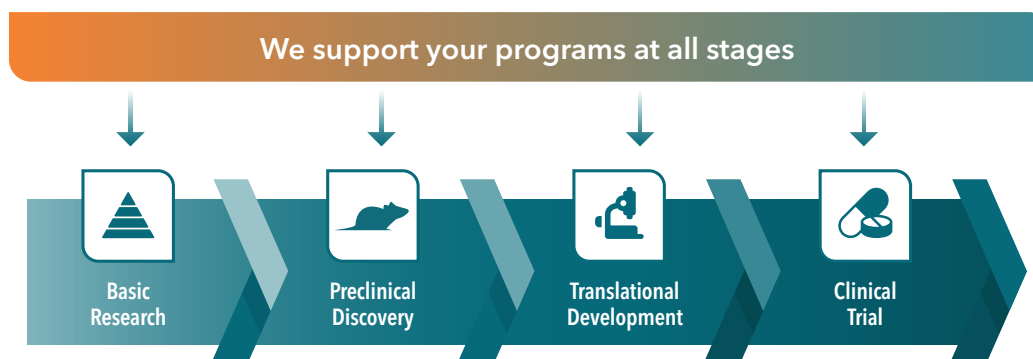
A morphology, imaging and pathology-based  
biomarker analysis platform



A JSR Life Sciences Company

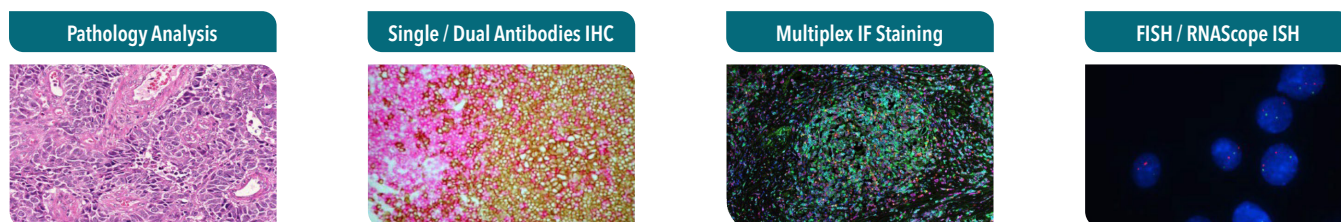
**FACTSHEET**

## Accelerating Drug Discovery with Tailored Laboratory Support



## Digital Pathology Capabilities

Trusted Pathology

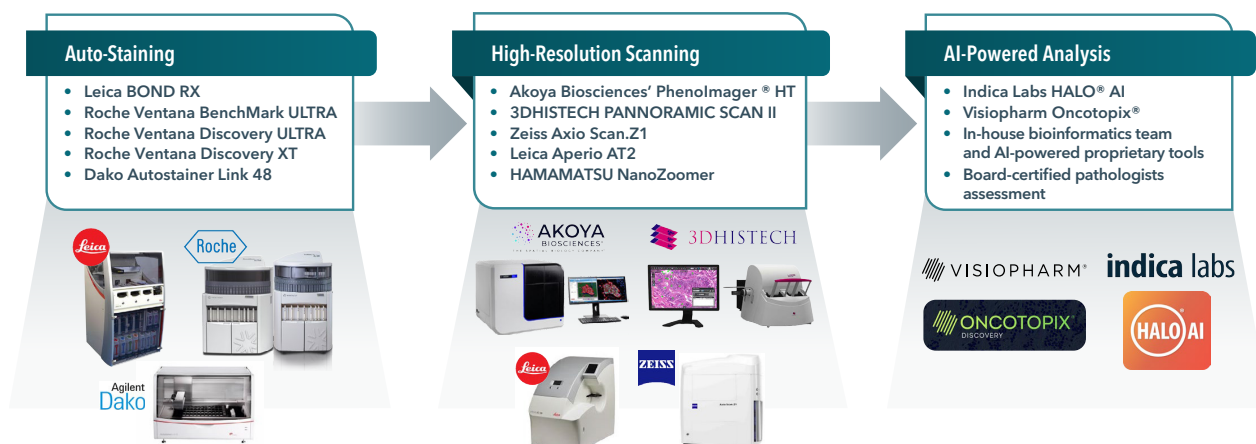


## Our Strength

Extensive Marker Library	Cutting-Edge Technology Platform	Expert Consultation and Evaluation	AI-Powered Image Analysis and Bioinformatics	Proven Assay Development and Validation
<ul style="list-style-type: none"> <li>Nearly 500 IHC-qualified human and mouse markers</li> <li>Custom validation for client-specific markers</li> </ul>	<ul style="list-style-type: none"> <li>Automated staining and high-throughput imaging</li> <li>Real-time data sharing and remote review</li> </ul>	<ul style="list-style-type: none"> <li>Board-certified pathologists and expert consultants</li> <li>Fast, high-quality assessments for research and clinical trials</li> </ul>	<ul style="list-style-type: none"> <li>AI-driven tissue analysis (HALO®, Visiopharm Oncotopix®)</li> <li>13+ years of in-house bioinformatics expertise in image analysis and deep learning</li> </ul>	<ul style="list-style-type: none"> <li>Reliable, reproducible assays ready for clinical applications</li> </ul>

## Advanced Digital Pathology Technology Platform

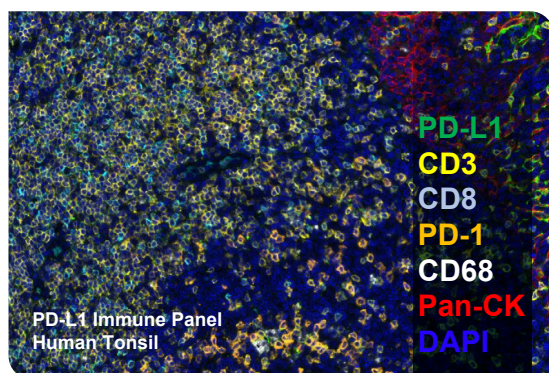
Rapid and impartial results that you can rely on.





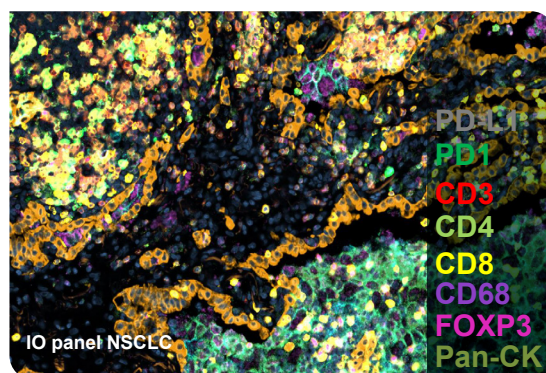
## Multiplex IF - More Data from Every Sample

### With Akoya Biosciences' Phenolmager® HT



- **More Reliable Data:** Reduces false positives (10x improved signal-to-noise)
- **Enhanced Precision:** Up to 50% increase in phenotyping and scoring accuracy

### With Ultivue InSituPlex® Technology



- **Profile Up to 12 Targets Simultaneously:** Get deeper biological insights in one run
- **Preserve Limited Samples:** Single-step antigen retrieval conserves precious specimens

## Multiplex IF Pre-Validated Human Panels with Akoya Biosciences' Phenolmager® HT

Multiplex IHC/IF Panel	Human	# of Colors
Immune Universal Panel	Pan-CK/HLA-DR/CD68/FOXP3/CD4/CD8/DAPI	7
	Pan-CK/CD68/CD163/FOXP3/CD4/CD8/DAPI	7
	CD3/CD8/CD45RO/CD56/CTLA-4/Granzyme B/DAPI	7
	CD11b/CD14/CD15/CD68/CD163/HLA-DR/DAPI	7
	CD8/CD45/Pan-CK/PD-1/PD-L1/TIM-3/DAPI	7
PD-L1-Immune Panel	Pan-CK/PD-L1/CD3/CD8/CD68/FOXP3/DAPI	7
	CD45/CD3/CD4/CD8/CD68/PD-L1/DAPI	7
	CD3/CD8/CD68/FoxP3/Pan-CK/PD-L1/DAPI	7
	CD3/CD4/CD8/CD68/FoxP3/PD-L1/DAPI	7
	CD4/CD8/CD68/PD-1/PD-L1/Pan-CK/DAPI	7
	CD3/CD8/CD68/PD-1/PD-L1/Pan-CK/DAPI	7
PD-L1 I/O Panel	Pan-CK / PD-L1 / CD8 / CD68 / DAPI	5
T Cell Activation Panel	Pan-CK / CD3 / Granzyme B / Ki67 / DAPI	5
Tumor-Associated Macrophages (TAM)	Pan-CK / HLA-DR / CD11b / CD68 / CD163 / CD11c / DAPI	7
Activated T Cell Panel	CD8 / CD3 / Granzyme B / Ki-67 / pan-CK / DAPI	6
Treg / Exhaustion Panel	CD4 / CD8 / Foxp3 / PD-1 / pan-CK / DAPI	6
APC Panel	CD11c / CD20 / CD68+CD163 / MHC II / pan-CK / DAPI	6
ADC Panel	ADC target/CD8/CD14/CD15/CD206/FoxP3/DAPI	7
	ADC target/CD8/CTLA-4/PD-1/PD-L1/DAPI	6
	ADC target/beta III Tubulin/Cleaved Caspase-3/p-H2A.X, Topoisomerase I/DAPI	6

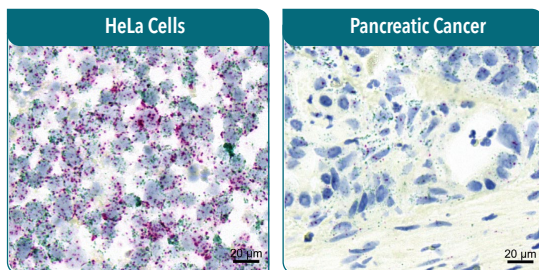


## Multiplex IF Pre-Validated Mouse Panels with Akoya Biosciences' PhenolImager® HT

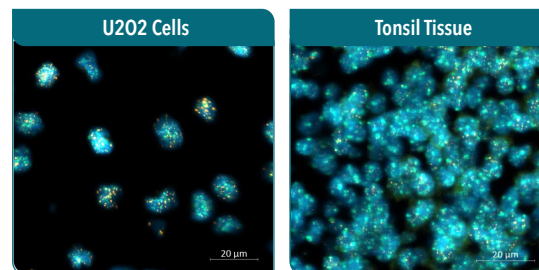
Multiplex IHC/IF Panel	Mouse	# of Colors
PD-L1-Immune Panel	Pan-CK/PD-L1/CD3/CD8/F4/80/Foxp3/Dapi	7
	PD-L1/PD1/CD3/CD8/F4/80/Foxp3/Dapi	7
	CCD45/CD3/CD4/CD8/F4/80/PD-L1Dapi	7
	CD4/CD8/F4/80/MHCII/Foxp3/PD-L1/Dapi	7
T Cell Panel	Pan-CK/TCF1/7/CD4/CD8/PD-1/Foxp3/Dapi	7
	CD8/Granzyme B/Ki67/Dapi	4
	CD4/CD8/F4/80/Dapi	4
Tumor-Associated Macrophages (TAM)	Pan-CK/CD11c/F4/80/iNOS/MHCII/Dapi	6
	CD11b/F4/80/iNOS/CD206/Dapi	5
Lymphoid and Myeloid Panel	CD45/CD3/CD4/CD8/F4/80/Dapi	6
	Pan-CK/Granzyme B/CD335/Ly6G/CD11b/Dapi	6
	CD8/F4/80/CD11c/CD335/Dapi	5
T and NKT Panel	CD45/CD3/CD8/CD335/IL12A/Dapi	6
Tumor Microenvironment Panel	Pan-CK/Collagen-I/CD3/CD8/Dapi	5
	Pan-CK/CD45/TIM3/LAG3/α-SMA/Dapi	6

## In Situ Hybridization

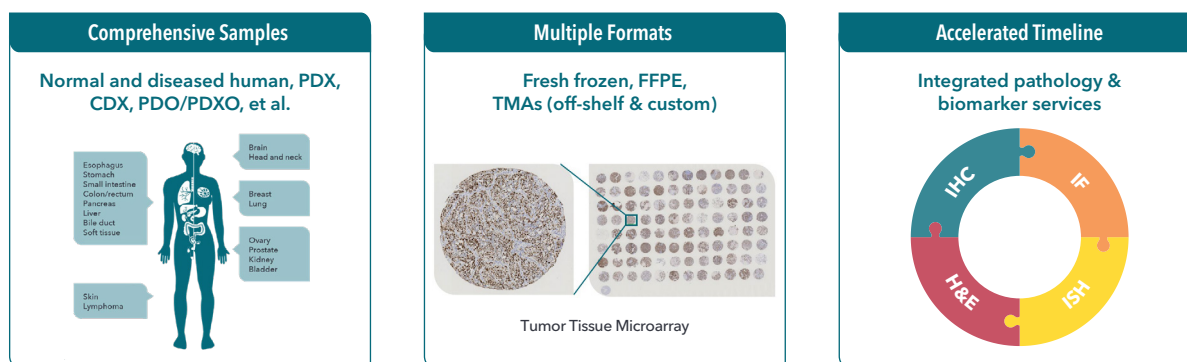
### RNAseco In Situ Hybridization (ISH)



### Fluorescence In Situ Hybridization (FISH)



## Streamline with Preclinical and Human Biospecimen Biobank



This data is not predictive of future results or study outcomes. Crown Bioscience accepts no liability for any loss or damage resulting from their use or reliance.

## Get in touch



US: +1 858 622 2900  
UK: +44 (0)1530 234871

busdev@crownbio.com  
www.crownbio.com

