

Global Specialty Biomarker Laboratory

for Translational Research and Clinical Trials

Integrated biomarker testing to accelerate drug development
across clinical phases and therapeutic areas.



Our CAP-, CLIA-, ISO 15189-accredited, and clinical-compliant labs in North America, APAC, and Europe deliver high-quality data with speed and flexibility.

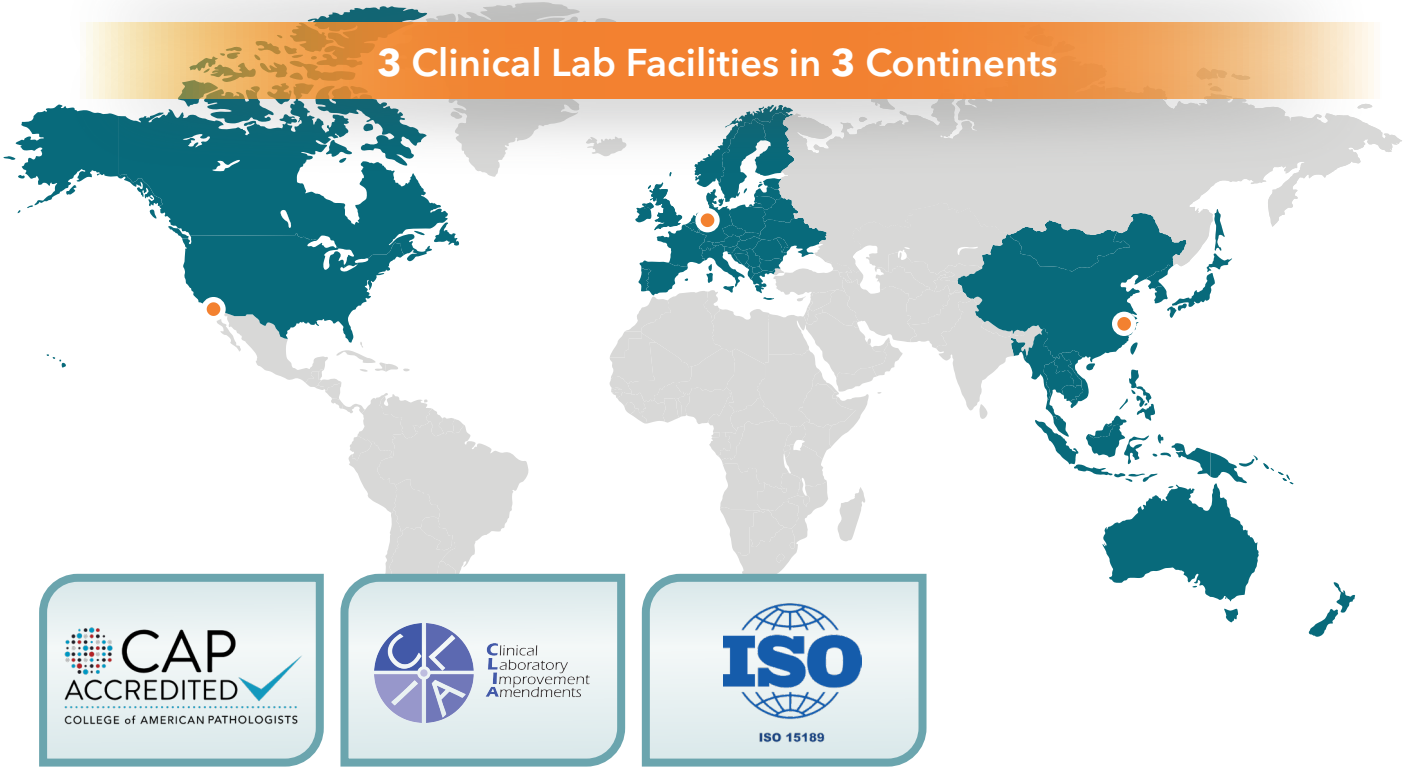
Crown Bioscience is a global specialty biomarker laboratory supporting drug development across all clinical phases and therapeutic areas.

We deliver integrated biomarker testing services—from assay development and sample analysis to data interpretation—anchored in scientific expertise and global compliance. Our platforms span tissue-based methods, spatial and multiomics technologies, advanced flow cytometry, and bioinformatics—empowering faster, more confident translational decisions.

Integrated Biomarker Services - From Sample to Insight



3 Clinical Lab Facilities in 3 Continents



Why Choose Crown Bioscience for Translational Biomarker Services?

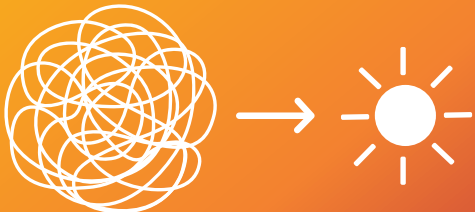
Custom Assay Development	Fast Turnaround and Global Capacity	Responsive Scientific Engagement
Designed around your study goals and sample types—not limited to pre-built panels	Avoid central lab bottlenecks with agile infrastructure, global logistics support, and multi-site coordination	Work directly with expert scientists—from protocol optimization to data interpretation
Compliant Global Lab Network	Deep Translational Expertise	Integrated Biomarker Strategy
Access biomarker testing in RUO or regulated environments, including CAP-, CLIA-, ISO 15189-accredited, and clinical-compliant labs	Access domain knowledge in tumor biology, immunology, and high-dimensional data analysis	Accelerate insights while maintaining compliance—from RUO exploration to trial-readiness

Clarity from Complexity

- **20+ Bioinformaticians**
- **13+ Years Experience**
- **Oncology | Immunology | Spatial | Multiomics**

Raw Data

Insights



How Our Bioinformatics Team Helps You Succeed

Unlock insights from your most complex datasets—with confidence. Our 20+ member bioinformatics team brings over 13 years of experience supporting oncology and immunology programs across preclinical and clinical stages. Whether you're identifying predictive biomarkers, stratifying patient populations, or interpreting multiomics and spatial data, we help you turn complexity into clarity—faster.



What We Support



Crown Bioscience provides end-to-end biomarker testing solutions, from biomarker discovery to clinical validation:

- Exploratory biomarker research (RUO use)
- Proof-of-concept and mechanism-of-action studies
- Predictive, pharmacodynamic, and prognostic biomarker analysis
- Panel design and marker selection consulting, especially in mIF, spatial, and flow cytometry settings
- Assay development, optimization, and validation for translational and clinical studies
- Method transfer and feasibility testing
- Fit-for-purpose assay qualification for early clinical trials
- Clinical trial support: Phase I-II
- Human sample testing under CAP, ISO 15189, CLIA or clinical-compliant (where applicable)

Crown Bioscience is committed to delivering high-quality, compliant biomarker data that meets the needs of translational research and clinical development, regardless of your location.



Explore Our Technical Platforms

We offer a broad range of validated technology platforms to meet the diverse needs of translational and clinical biomarker testing.

Capabilities by Technology Domain

Tissue Biomarker Analysis

- **Immunohistochemistry (IHC) and multiplex IHC**
- **Multiplex immunofluorescence (mIF):** *Phenolmager®* (Akoya Biosciences), *InSituPlex®* (Ultivue)
- **In situ hybridization:** Fluorescence in situ hybridization (FISH), *RNAscope®* ISH (Advanced Cell Diagnostics)
- **Digital pathology and AI-powered image analysis:** *HALO®* AI (Indica Labs), *Oncotopix®* (Visiopharm), in-house bioinformatics pipelines, board-certified pathologist review
- **Spatial transcriptomics and proteomics:** *GeoMx®* DSP (Digital Spatial Profiler, NanoString Technologies), *Visium* Spatial Gene Expression v1, v2, and HD (10x Genomics)
- **Tumor tissue microarrays** (off-shelf and custom available upon request)
- **Rare cell analysis**
- **High-content imaging**

Genomics and Transcriptomics

- **Targeted NGS panels** (e.g., CAP-accredited NGSST, TSO500)
- **Gene expression profiling panel:** *nCounter®* (NanoString Technologies)
- **Whole exome sequencing (WES) and whole genome sequencing (WGS)**
- **RNA sequencing (RNA-Seq), long non-coding RNA sequencing (lncRNA-Seq)**
- **Single-cell RNA sequencing** (10x Genomics Chromium)
- **Whole genome bisulfite sequencing (WGBS)**
- **Microbiome sequencing:** full-length 16S rRNA, metagenomics
- **PCR, qPCR, digital droplet PCR (ddPCR), Sanger sequencing**
- **Long-read sequencing** (PacBio)
- **Optical genome mapping** (Bionano Genomics)

Immunology Assays

- **Flow cytometry and fluorescence-activated cell sorting (FACS):** traditional and spectral
- **T-cell functional assays**
- **Cytokine and chemokine profiling** (MSD, *Luminex®*)
- **Immune cell phenotyping**

Proteomics and Protein Analysis

- **Flow cytometry** for protein markers: traditional and spectral
- **Immunoassays:** ELISA, MSD, *Luminex®*, ELISpot
- **DIA mass spectrometry:** global, targeted, and post-translational modification (PTM) proteomics
- **Western blotting:** standard and Simple Western™
- **2D gel electrophoresis**

Bioanalysis and Biofluid Testing

- **Bioanalytical assays for small molecules, biologics and ADC**
- **Ligand binding assays**
- **Biomarker analysis in plasma, serum, and urine**
- **Complete blood count (CBC), blood chemistry, and general biochemistry**

Capabilities by Sample Type

Liquid Biopsy

- cfDNA, cfRNA, ctDNA, CTCs, EVs, plasma proteomics, clinical chemistry

Other Biofluids

- Urine, CSF, BAL, and others

Tissue Biopsy

- Histology, IHC/mIF, spatial omics, NGS/proteomics, digital pathology



What We Deliver: Services Aligned to Your Workflow

Sample Processing & Preparation

- ✓ Tissue embedding, sectioning, staining, microdissection and macrodissection

Biomarker Identification & Prioritization

- ✓ Hypothesis-driven and hypothesis-free discovery
- ✓ Predictive and prognostic biomarker analysis

Pathology & Histology Support

- ✓ Board-certified pathologist review
- ✓ Digital pathology interpretation
- ✓ Quantification and scoring of biomarkers

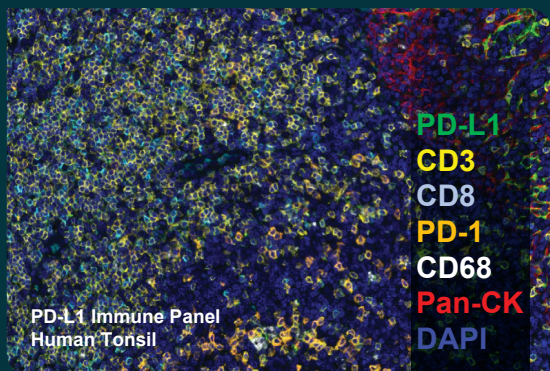
Bioinformatics & Data Analysis

- ✓ Multiomics data integration
- ✓ Statistical and computational modeling
- ✓ Interactive visualization and reporting

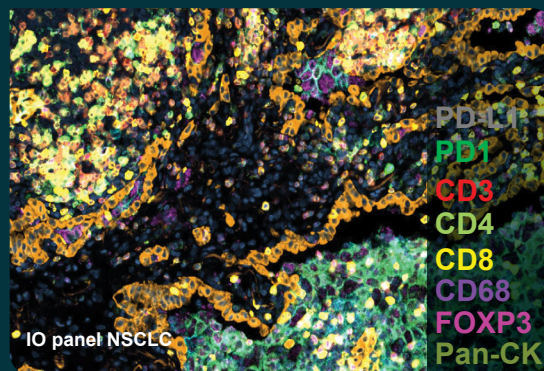
Capability Spotlight: IHC and mIF Services

With over 500 prequalified biomarkers—including 100+ IVD-validated assays—our IHC and multiplex immunofluorescence (mIF) services are designed to support both exploratory research and clinical trial readiness. Selected assays are CAP-accredited and interpreted by board-certified pathologists. With advanced image analysis powered by AI and proprietary software, whether you're assessing pharmacodynamic endpoints or generating tissue-based biomarkers for regulatory submission, we deliver reliable, publication-quality data with speed and precision.

With Akoya Biosciences' PhenolImager® HT



With Ultivue InSituPlex® Technology



Select CAP-accredited IHC markers include:

(Our panel is continually expanding. Contact us for the latest validated marker list.)

- Ki-67
- ER / PgR / Her2 / gastric Her2
- HER2 dual ISH
- PD-L1
- MLH1 / MSH2 / MSH6 / PMS2
- CD20

Get in touch



US: +1 858 622 2900
UK: +44 (0)1530 234871

busdev@crownbio.com
www.crownbio.com

